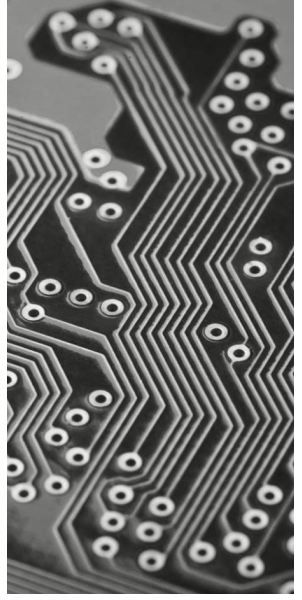


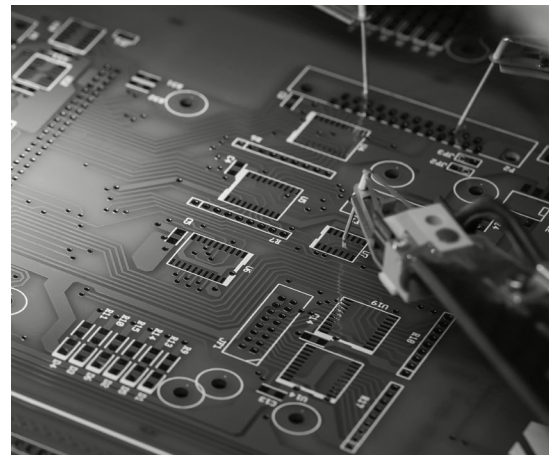
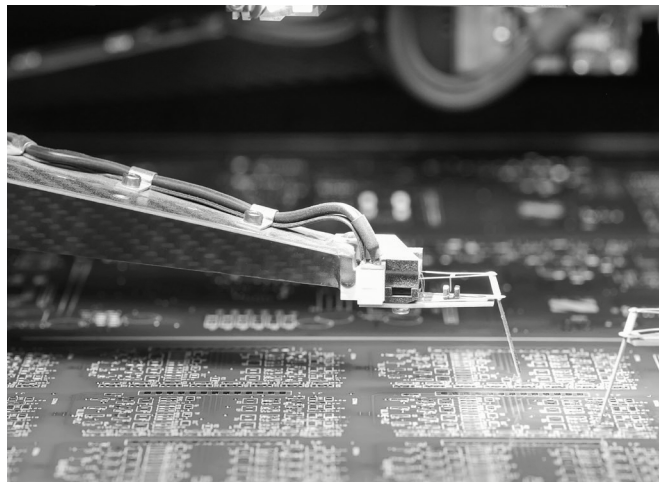
**PCB
Power**

Empower your electronics

PCB Fabrication Order Checklist



pcbpower.com



25⁺
YEARS OF **EXCELLENCE**



PCB Fabrication Order Checklist

Essential Documentation & Files

Input Data Package

- ☐ Gerber files for all circuit layers - signal layers, power planes, ground planes
- ☐ Mask layers - solder mask for top and bottom sides
- ☐ Silk layers - silkscreen for component markings and text
- ☐ Paste layers - solder paste stencil data (if assembly required)
- ☐ Outline layer - board shape and dimensions
- ☐ Drill file - hole sizes, locations, and specifications

Please note -

1. Preferred format is RS-274X (Extended Gerber)
 2. File names clearly indicate function (e.g., Top Copper.GTL, BoardOutline.GM1)
-

PCB Specifications

- ☐ Quantity & Lead time - production quantity and delivery requirements
 - ☐ PCB Type - rigid, flex, or rigid-flex specification
 - ☐ PCB Size - board dimensions with tolerances
 - ☐ PCB Thickness - total stackup thickness (standard: 1.6mm or custom)
 - ☐ Copper finish - copper weight for each layer (1oz, 2oz, etc.)
 - ☐ Surface finish requirements - HASL, ENIG, OSP, or other finishes
 - ☐ Customer panel details - if panelization is required
 - ☐ Special requirements - solder mask/silk colors, logo/date codes, tolerances, etc.
 - ☐ Material specification - FR4 standard or special materials like high-Tg
-

Impedance Control Requirements

- ☐ Impedance details included - controlled impedance requirements
- ☐ Track width of signal tracks - specify trace widths for impedance control
- ☐ Signal layer - identify which layers require impedance control
- ☐ Reference layer - specify reference planes for impedance calculation
- ☐ Impedance value - target impedance values (e.g., 50Ω, 100Ω differential)
- ☐ Stack up details - layer arrangement and dielectric specifications



**PCB
Power**

Empower your electronics

pcbpower.com

Quality & Testing Requirements

Special Instructions

- ☐ Tests or inspection requirements - specify electrical testing needs
 - ☐ Visual inspection standards - IPC class requirements
 - ☐ Electrical testing - continuity, isolation, and functionality tests
 - ☐ Impedance testing - verification of controlled impedance (if required)
-

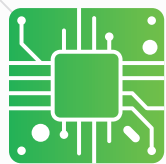
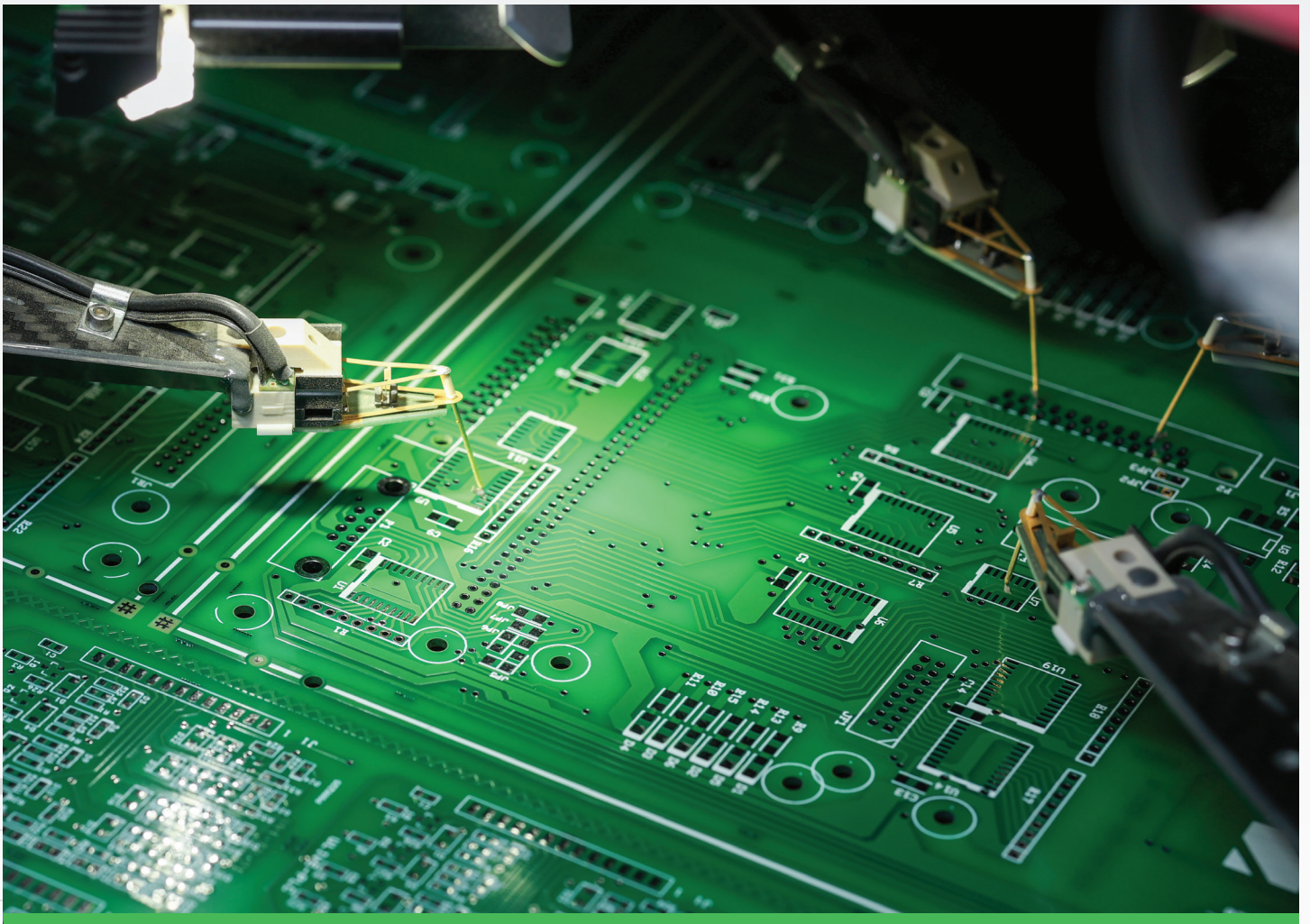
Standards & Compliance

- ☐ IPC class specified (Class 1, 2, or 3 workmanship standards)
 - ☐ RoHS compliance requirement
 - ☐ UL certification needs (if applicable)
 - ☐ Other certifications - specify any additional standards required
 - ☐ Date code - specify if date code is required
-

Quantity & Timeline

- ☐ Production quantity specified
- ☐ Delivery timeline requirements

Contact our technical team if you need assistance with any of these requirements.



**PCB
Power**

Empower your electronics

**Over 25 Years of Excellence
in PCB Manufacturing**

✉ pcb.india@pcbpower.com

✉ pcb.global@pcbpower.com

🌐 pcbpower.com

